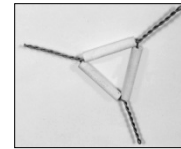


Wire Gauze Squares, galvanized iron wire w/turned edges

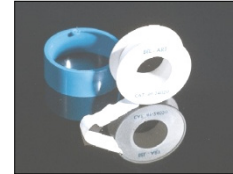
Plain	
4 x 4" WG-144	\$1.00
5 x 5" WG-155	\$1.05
6 x 6" WG-166	\$1.40
Ceramic Center	
4 x 4" WG-244	\$1.10
5 x 5" WG-255	\$1.55
6 x 6" WG-266	\$1.75

Continued



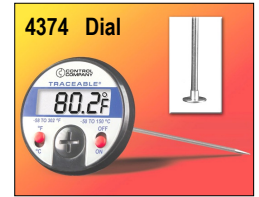
Wire Triangles, clay pipe, galvanized iron wire

1½" Pipe Length. WT-15	\$1.45
2" Pipe Length. WT-20	\$1.75
2½" Pipe Length. WT-25	\$2.05



Tape, Teflon®, ½ x 300", USA, each. 240200001..... \$5.95

Thermometers, Digital, Traceable®



Model	Range	Resolution	Accuracy	Probe Length	Unit Size	Replacement Battery	Price
4352	-58 to 302°F/ -50 to 150°C	0.1°	±0.2°C	8"	11 x 13/16" dia	*357	\$47.45
4354	-58 to 572°F/ -50 to 300°C	0.1°	±0.5°C	11.4"	14 3/8 x 13/16" dia	*357	\$47.15
4371	-58 to 572°F/ -50 to 300°C	0.1°	±1.0°C	8"	10 1/4 x 1 3/4" dia	*389AC	\$22.15
4378	-58 to 572°F/ -50 to 300°C	0.1°	±0.4°C	8"	10 1/4 x 1 3/4" dia	*389AC	\$50.35
4158	14.2 to 131°F/ -9.9 to 55°C	0.1°	±0.5°C	N/A	2 1/2 x 1 x 3/8"	*389AC	\$23.75
4351	-58 to 302°F/ -50 to 150°C	0.1°	±1.0°C	1"	3 3/4 x 3/4" dia	*357	\$20.75
4374	-58 to 302°F/ -50 to 150°C	0.1°	±0.3°C	5 1/4"	6 1/2 x 2 1/8" dia	*357	\$41.90

*Replacement Batteries: **357** / \$4.00 **389AC** / \$2.25.

Thermometers, Glass, economy

Model	Range	Divisions	Length	Features	Price
97-3104	-20 to 230°F/ -30 to 110°C	2°F/1°C	5 3/4"	Red Alcohol/Aluminum V-Back.	\$2.05
97-3108	0-230°F/ -20 to 110°C	2°F/1°C	12"	Red Alcohol/White Background. Partial immersion.	\$3.15
97-3137	-20 to 110°C	1°C	12"	Blue-Filled/White Background. Partial immersion.	\$3.40

Continued